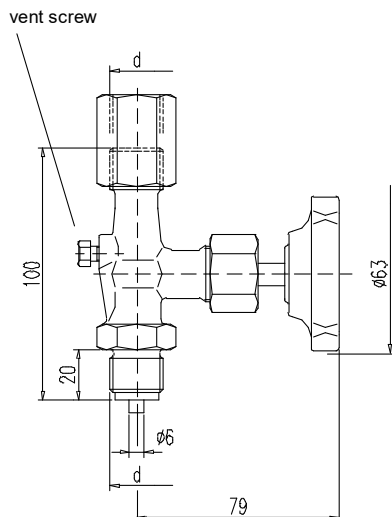


Pressure gauge Valves as per DIN 16270

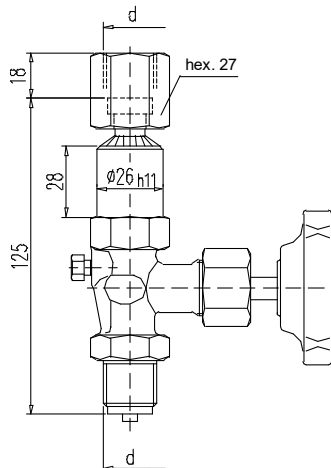
Design A

with adjusting nut
DIN 16 283

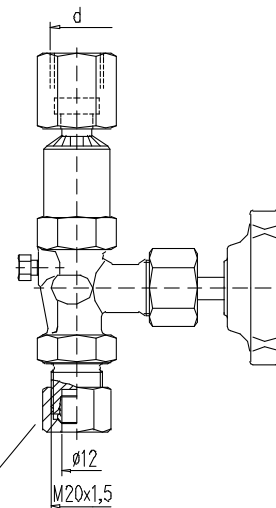


Design B

with swivel nut and shaft for
pressure gauge support



Design B - AS12



tube fitting
O. D. 12 mm
line S

PN ³⁾	Connection thread d	Material	Order-Codes:		
			Design A	Design B	Design B-AS12
250 400 400	G 1/2	brass	003.4.160.0000.0	S004.16.020	S004.16.020.13
		steel	003.4.161.0000.0	S004.16.120	S004.16.120.13
		st. st.	003.4.162.0000.0	S004.16.220	S004.16.220.13
250 400 400	M 20x1,5	brass	S004.16.050	-	-
		steel	S004.16.150	-	-
		st. st.	S004.16.250	-	-

Components	Brass ¹⁾	Steel	Stainless steel ¹⁾
	DIN - Material Number		
Body ²⁾	brass	1.0460	1.4571
Valve stem	1.4104		1.4571
Needle tip	1.4104		1.4571
Packing	PTFE up to 200°C (graphite up to 250°C)		
Union nut	steel	stainless steel	
Adjusting nut	steel		stainless steel
Swivel nut	brass	steel	stainless steel
Vent screw	1.4571		
Handwheel	plastic		

Abbreviation acc. to DIN	Material	Temperature rating
10 Ms	brass	- 10 up to + 120°C
10 St	steel	- 10 up to + 120°C
20 St	stainless steel	- 20 up to + 200/250°C

- **Body:** brass: pressed part
steel / stainless steel: die-pressed part
- **Surface:** steel phosphatized
- Internal stem thread
- Stem with cold rolled surface and non-rotating needle tip

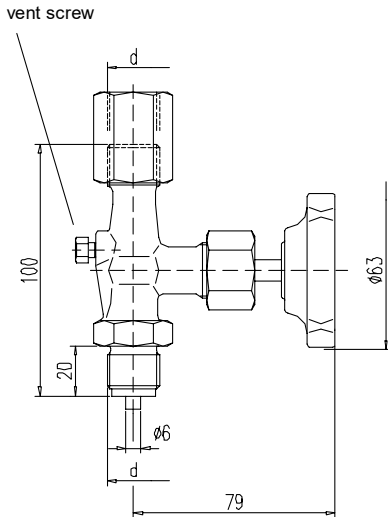
- 1) Can also be supplied for oxygen service.
Please notice order instruction B 3!
- 2) Available with inspection certificate 3.1.B acc. to EN 10 204
- 3) Valves with PN 640 on request



Pressure gauge Valves similar to DIN 16270 - DVGW tested

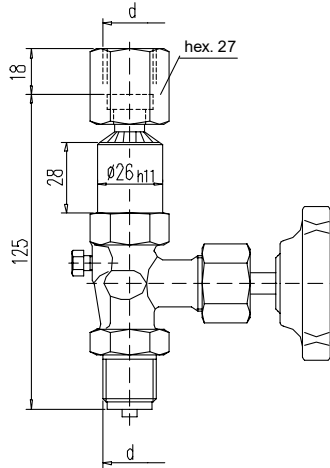
Design A

with adjusting nut
DIN 16 283

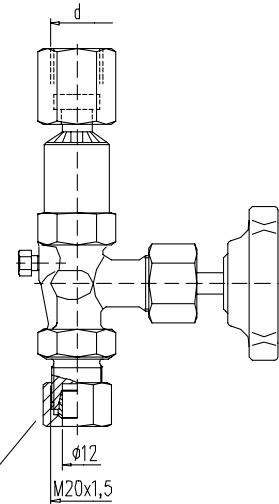


Design B

with swivel nut and shaft for
pressure gauge support



Design B - AS12



tube fitting
O. D. 12 mm
line S

D V G W - Registration

DVGW-Register-No.

DG-4315BQ0226

PN	Connection thread d	Material	Order-Codes:		
			Design A	Design B	Design B-AS12
100	G 1/2	brass steel st. st.	003.4.260.0000.0 003.4.261.0000.0 003.4.262.0000.0	S004.26.020 S004.26.120 S004.26.220	- S004.26.120.13 S004.26.220.13

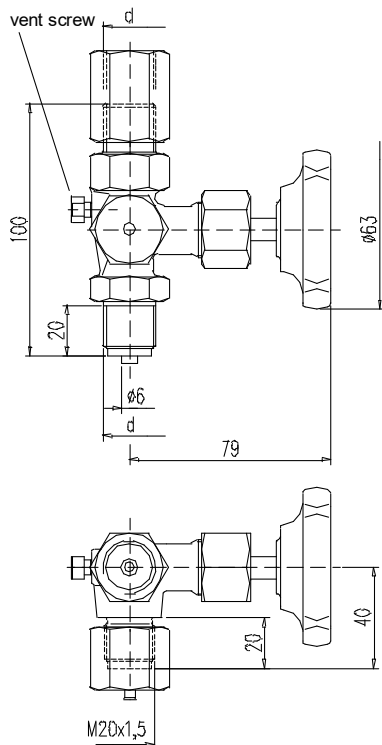
Components	Brass	Steel	Stainless steel
	DIN - Material Number		
Body	brass	1.0460	1.4571
Valve stem	1.4104		1.4571
Needle tip	1.4104		1.4571
O-rings	FPM (Viton®)		
O-ring retainer	brass		1.4571
Union nut	galv. steel	steel	stainless steel
Adjusting nut	brass	steel	stainless steel
Swivel nut	brass	steel	1.4571
Vent screw	1.4571		
Handwheel	plastic		

- **Body:** brass: pressed part
steel / stainless steel: die-pressed part
- **Surface:** steel phosphatized
- Internal stem thread
- Stem with colled rolled surface and non-rotating needle tip
- Max. operating pressure: 100 bar
Temperature: - 5°C up to + 60°C
- Basis of type examination: DVGW VP 308
- For all kinds of gas in accordance with DVGW-list number G 260
- Available with inspection certificate 3.1 acc. to EN 10 204

Pressure gauge Valves as per DIN 16271, test stud M 20x1,5

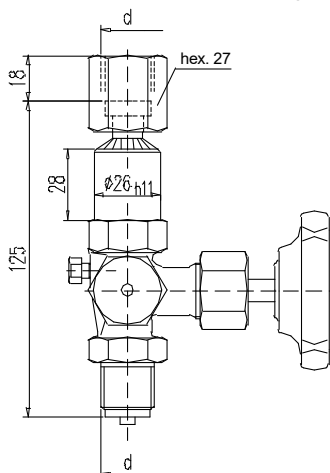
Design A

with adjusting nut
DIN 16 283

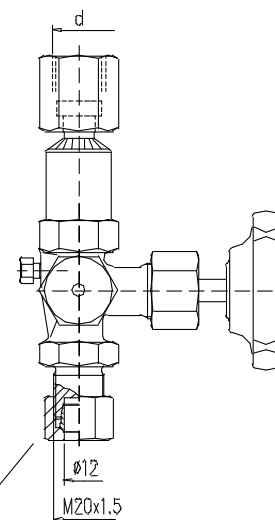


Design B

with swivel nut and shaft for
pressure gauge support



Design B - AS12



tube fitting
O. D. 12 mm
line S

PN ³⁾	Connection thread d	Material	Order-Codes:		
			Design A	Design B	Design B-AS12
250 400 400	G 1/2	brass	003.4.170.0000.0	S004.17.020	S004.17.020.13
		steel	003.4.171.0000.0	S004.17.120	S004.17.120.13
		st. st.	003.4.172.0000.0	S004.17.220	S004.17.220.13
250 400 400	M 20x1,5	brass	S004.17.050	-	-
		steel	S004.17.150	-	-
		st. st.	S004.17.250	-	-

Components	Brass ¹⁾	Steel	Stainless steel ¹⁾
	DIN - Material Number		
Body ²⁾	brass	1.0460	1.4571
Valve stem	1.4104		1.4571
Needle tip	1.4104		1.4571
Packing	PTFE up to 200°C (graphite up to 250°C)		
Sealing cap	steel		stainless steel
Union nut	steel		stainless steel
Adjusting nut	steel		stainless steel
Swivel nut	brass	steel	stainless steel
Vent screw	1.4571		
Handwheel	plastic		

Abbreviation acc. to DIN	Material	Temperature rating
10 Ms	brass	- 10 up to + 120°C
10 St	steel	- 10 up to + 120°C
20 St	stainless steel	- 20 up to + 200/250°C

- Body: brass: pressed part
steel / stainless steel: die-pressed part
- Surface: steel phosphatized
- Internal stem thread
- Stem with cold rolled surface and non-rotating needle tip

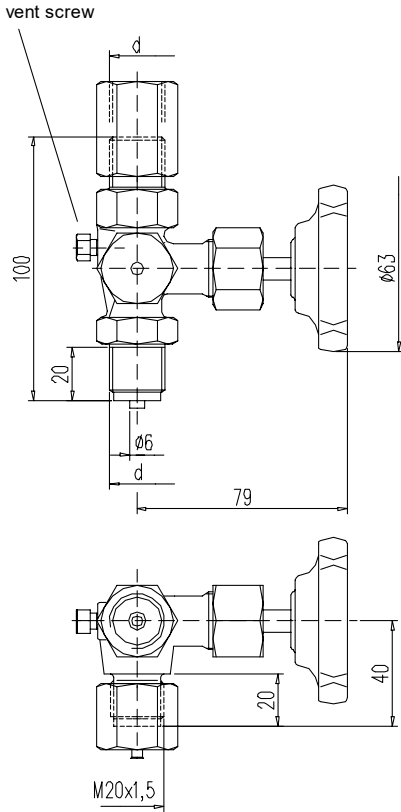
- 1) Can also be supplied for oxygen service. Please notice order instruction B 3!
- 2) Available with inspection certificate 3.1.B acc. to EN 10 204
- 3) Valves with PN 640 on request



Pressure gauge Valves similar DIN 16271, test stud M 20x1,5 - DVGW tested

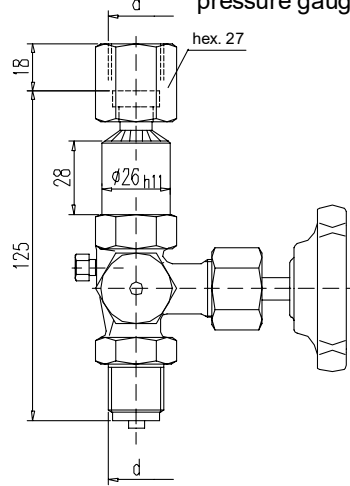
Design A

with adjusting nut
DIN 16 283



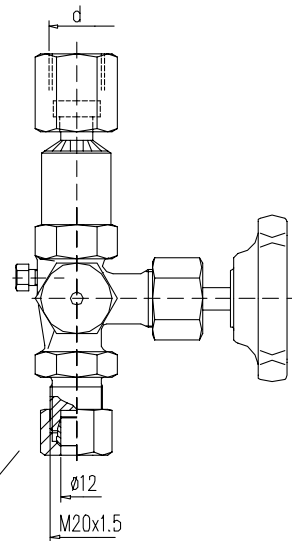
Design B

with swivel nut and shaft for
pressure gauge support



Design B - AS12

tube fitting
O. D. 12 mm
line S



D V G W - Registration	
DVGW-Register-No.	DG-4315BQ0226

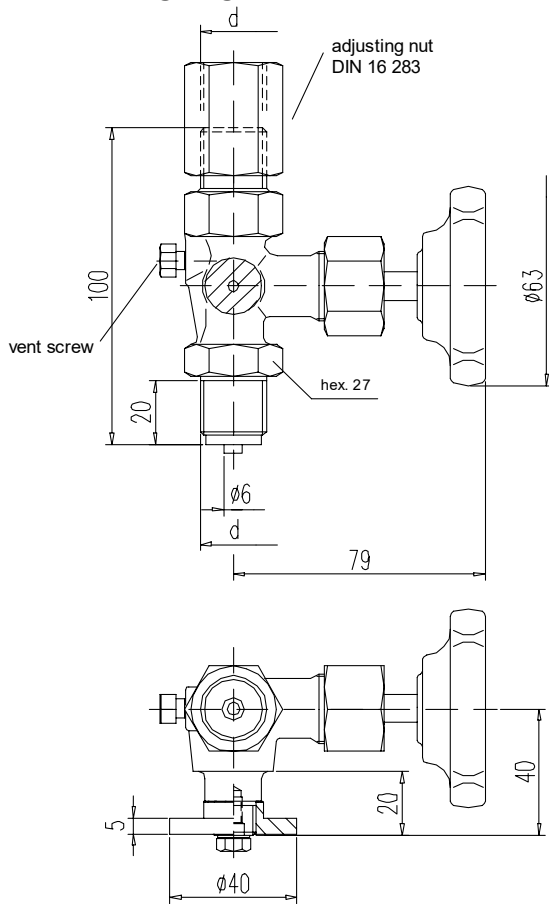
PN	Connection thread d	Material	Part no.		
			Design A	Design B	Design B-AS12
100	G 1/2	brass	S004.27.000	S004.27.020	-
		steel	S004.27.100	S004.27.120	S004.27.120.13
		st. st.	S004.27.200	S004.27.220	S004.27.220.13

Components	Brass	Steel	Stainless steel
	DIN - Material Number		
Body	brass	1.0460	1.4571
Valve stem	1.4104		1.4571
Needle tip	1.4104		1.4571
O-rings	FPM (Viton®)		
O-ring retainer	brass		1.4571
Sealing cap	galv. steel	steel	stainless steel
Union nut	galv. steel	steel	stainless steel
Adjusting nut	brass	steel	stainless steel
Swivel nut	brass	steel	1.4571
Vent screw	1.4571		
Handwheel	plastic		

- **Body:** brass: pressed part
steel / stainless steel: die-pressed part
- **Surface:** steel phosphatized
- Internal stem thread
- Stem with colled rolled surface and non-rotating needle tip
- Max. operating pressure: 100 bar
Temperature: - 5°C bis + 60°C
- Basis of type examination: DVGW VP 308
- For all kinds of gas in accordance with DVGW-list number G 260
- Available with inspection certificate 3.1 acc. to EN 10 204

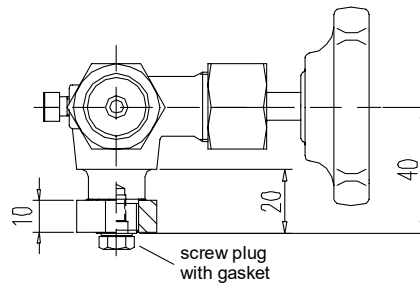
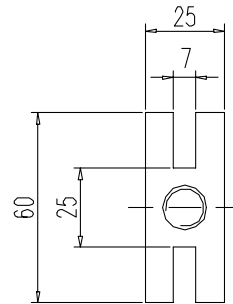
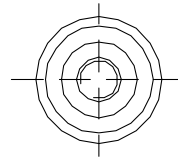


Pressure gauge Valves similar DIN 16271, test flange - DVGW tested



test flange
Ø 40 x 5 mm

test flange
60 x 25 x 10 mm



D V G W - Registration

DVGW-Register-No.

DG-4315BQ0226

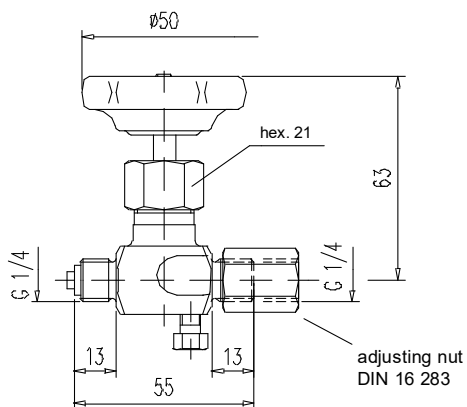
PN	Connection thread d	Material	Part no. with test flange	
			Ø 40 x 5 mm	60 x 25 x 10 mm
100	G 1/2	brass steel st. st.	S 004.27.060	S 004.27.070
			S 004.27.160	S 004.27.170
			S 004.27.260	S 004.27.270

Components	Brass	Steel	Stainless steel
	DIN - Material Number		
Body	brass	1.0460	1.4571
Flange	brass	steel	1.4571
Valve stem	1.4104		1.4571
Needle tip	1.4104		1.4571
O-rings	FPM (Viton®)		
O-ring retainer	brass		1.4571
Union nut	galv. steel	steel	stainless steel
Adjusting nut	brass	steel	stainless steel
Screw plug	steel		A4-70
Vent screw	1.4571		
Handwheel	plastic		

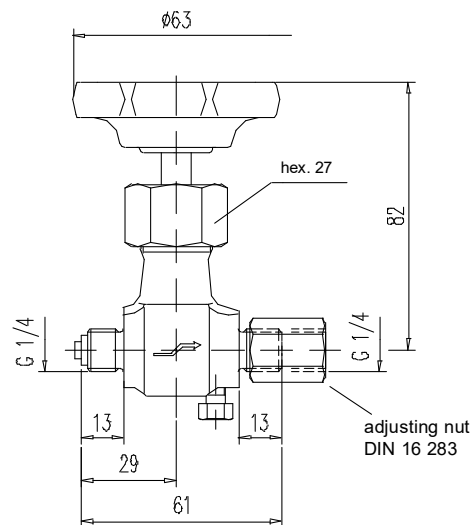
- Body: brass: pressed part
steel / stainless steel: die-pressed part
- Surface: steel phosphatized
- Internal stem thread
- Stem with cold rolled surface and non-rotating needle tip
- Max. operating pressure: 100 bar
Temperature: - 5°C up to + 60°C
- Basis of type examination: DVGW VP 308
- For all kinds of gas in accordance with DVGW-list number G 260
- Available with inspection certificate 3.1 acc. to EN 10 204

Pressure gauge Valves male/female swivel nut 1/4" BSP

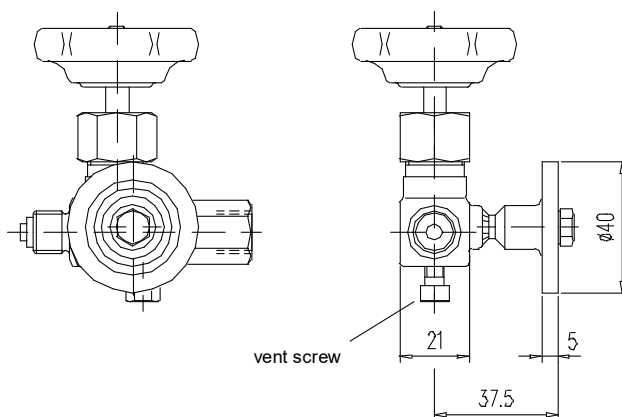
Type 1



Type 2



Type 3



PN	Type	Material	Temperature rating	Order-Code:
125	1	brass	- 10 up to + 120°C	003.4.120.0000.0
250	2	steel st. st.	- 10 up to + 120°C - 20 up to + 200°C	S004.13.130 S004.13.230
125	3	brass	- 10 up to + 120°C	S004.12.065

Components	Brass ¹⁾	Steel	Stainless steel ¹⁾
	DIN - Material Number		
Body ²⁾	brass	1.0460	1.4571
Valve stem	brass	1.4104	1.4571
Needle tip	brass	1.4104	1.4571
Packing	PTFE		
Union nut	brass	steel	stainless steel
Adjusting nut	brass	steel	stainless steel
Vent screw	1.4571		
Handwheel	plastic		

- Body: brass: pressed part
steel / stainless steel: die-pressed part
- Surface: steel phosphatized
- Internal stem thread

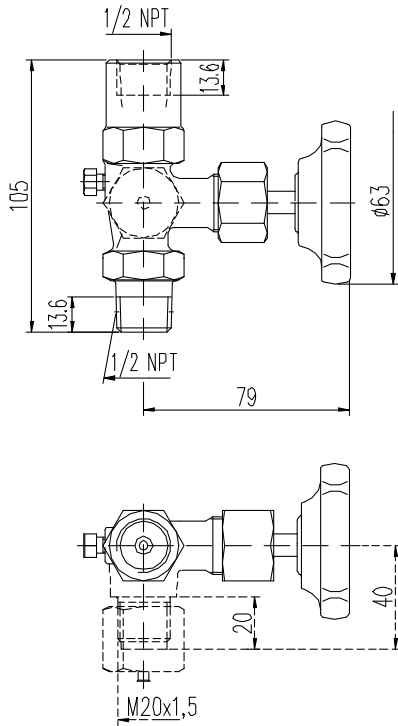
- 1) Can also be supplied for oxygen service. Please notice order instruction B 3!
- 2) Available with inspection certificate 3.1.B acc. to EN 10 204



Pressure gauge Valves male/female 1/2" NPT
Pressure gauge Double Valves male/female 1/2" NPT

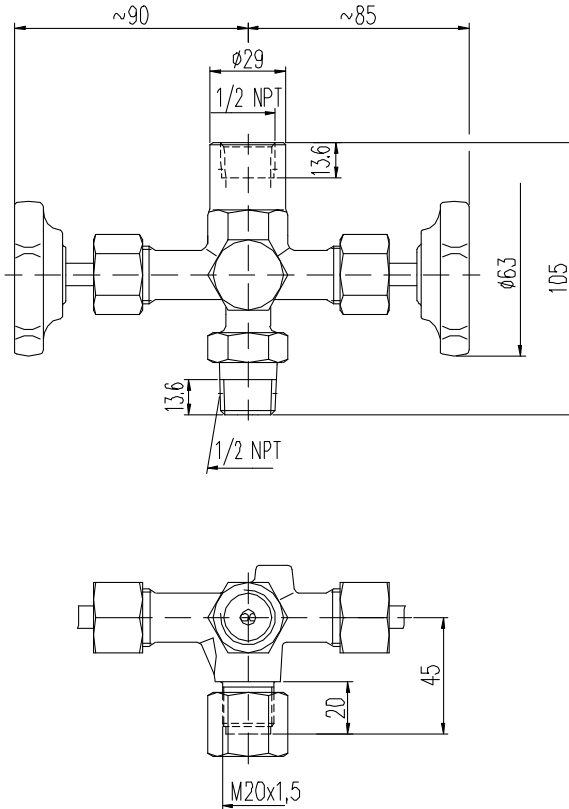
Type 1

Pressure gauge valve without alternative with test connection



Type 2

Double pressure gauge valve with test connection



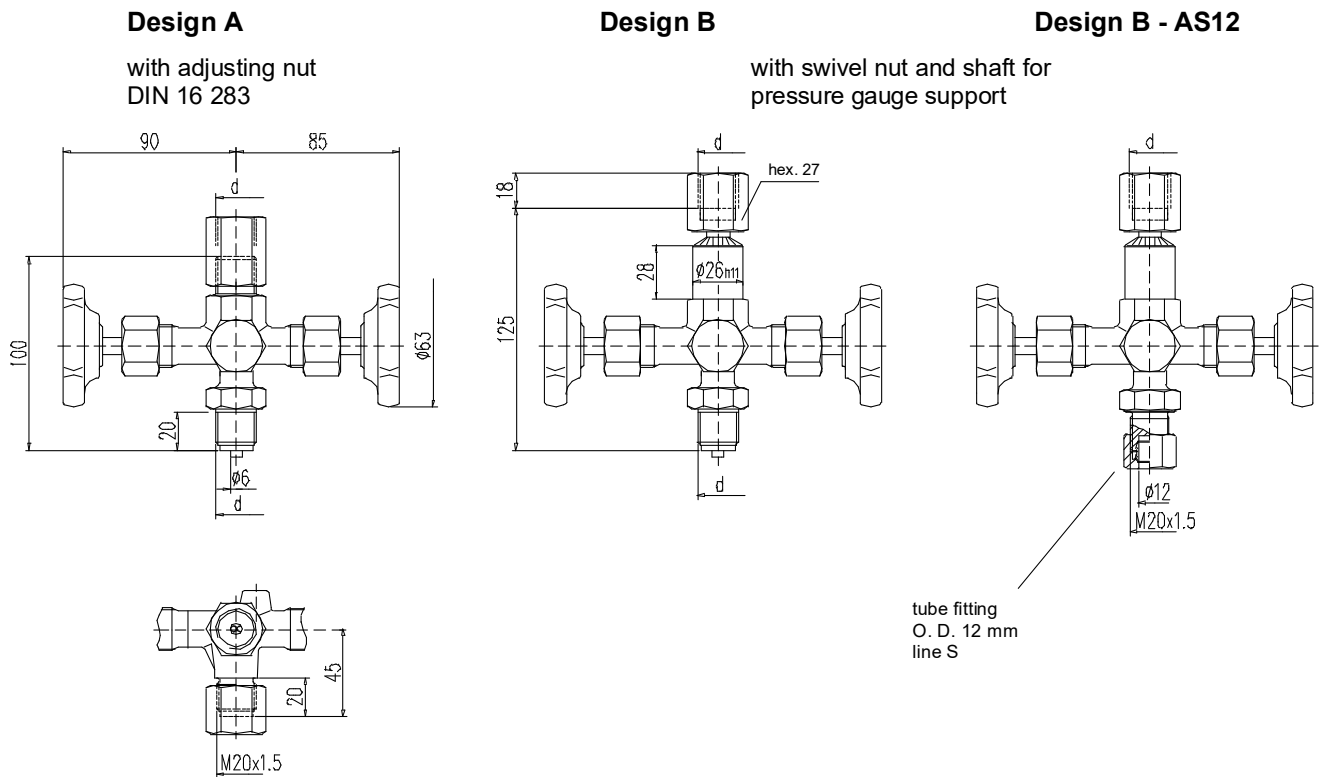
PN	Connection thread d	Material	Part no.		
			Type 1 without	Type 1 with test connection M 20 x 1,5	Type 2 with
400	1/2 NPT	steel st. st.	S004.16.183 S004.16.283	S004.17.135.02 ³⁾ S004.17.235.02 ³⁾	S004.60.135.02 S004.60.235.02

Components	Steel	Stainless steel ¹⁾
	DIN - Material Number	
Body ²⁾	1.0460	1.4571
Valve stem	1.4104	1.4571
Needle tip	1.4104	1.4571
Packing	PTFE up to 200°C	
Union nut	steel	stainless steel
Vent screw	1.4571	
Handwheel	plastic	

- **Body:** die-pressed part
- **Surface:** steel phosphatized
- Internal stem thread
- Stem with cold rolled surface and non-rotating needle tip
- Valves with alternative test connections optional

- 1) Can also be supplied for oxygen service. Please notice order instruction B 3!
- 2) Available with inspection certificate 3.1.B acc. EN 10 204
- 3) With protecting cap and sealing lense

Pressure gauge Double Valves similar DIN 16272, test stud M20x1,5



PN ³⁾	Connection thread d	Material	Order-Codes:		
			Design A	Design B	Design B-AS12
250 400 400	G 1/2	brass	003.4.600.0000.0	S004.60.020	S004.60.020.13
		steel	003.4.601.0000.0	S004.60.120	S004.60.120.13
		st. st.	003.4.602.0000.0	S004.60.220	S004.60.220.13
250 400 400	M 20x1,5	brass	S004.60.050	-	-
		steel	S004.60.150	-	-
		st. st.	S004.60.250	-	-

Components	Brass ¹⁾	Steel	Stainless steel ¹⁾
	DIN - Material Number		
Body ²⁾	brass	1.0460	1.4571
Valve stem	1.4104		1.4571
Needle tip	1.4104		1.4571
Packing	PTFE up to 200°C (graphite up to 250°C)		
Union nut	steel		stainless steel
Adjusting nut	steel		stainless steel
Swivel nut	brass	steel	stainless steel
Handwheel	plastic		

Abbreviation acc. to DIN	Material	Temperature rating
10 Ms	brass	- 10 up to + 120°C
10 St	steel	- 10 up to + 120°C
20 St	stainless steel	- 20 up to + 200/250°C

- **Body:** brass: pressed part
steel / stainless steel: die-pressed part
- **Surface:** steel phosphatized
- Internal stem thread
- Stem with cold rolled surface and non-rotating needle tip

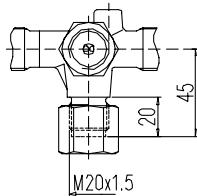
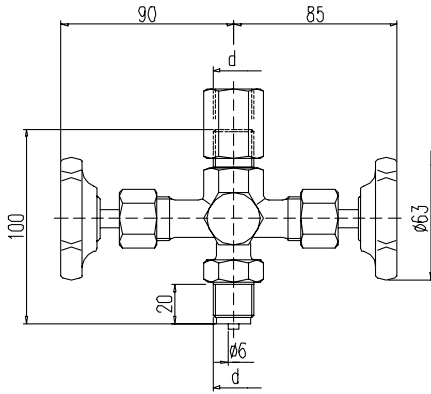
- 1) Can also be supplied for oxygen service.
Please notice order instruction B 3!
- 2) Available with inspection certificate 3.1.B
acc. to EN 10 204
- 3) Valves with PN 640 on request



Pressure gauge Double Valves similar DIN 16272, test stud M20x1,5 - DVGW tested

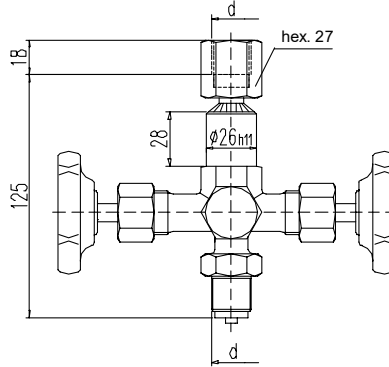
Design A

with adjusting nut
DIN 16 283

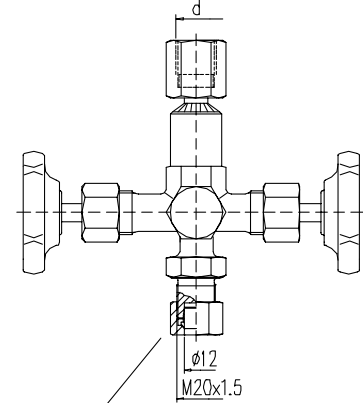


Design B

with swivel nut and shaft for
pressure gauge support



Design B - AS12



tube fitting
O. D. 12 mm
line S

D V G W - Registration

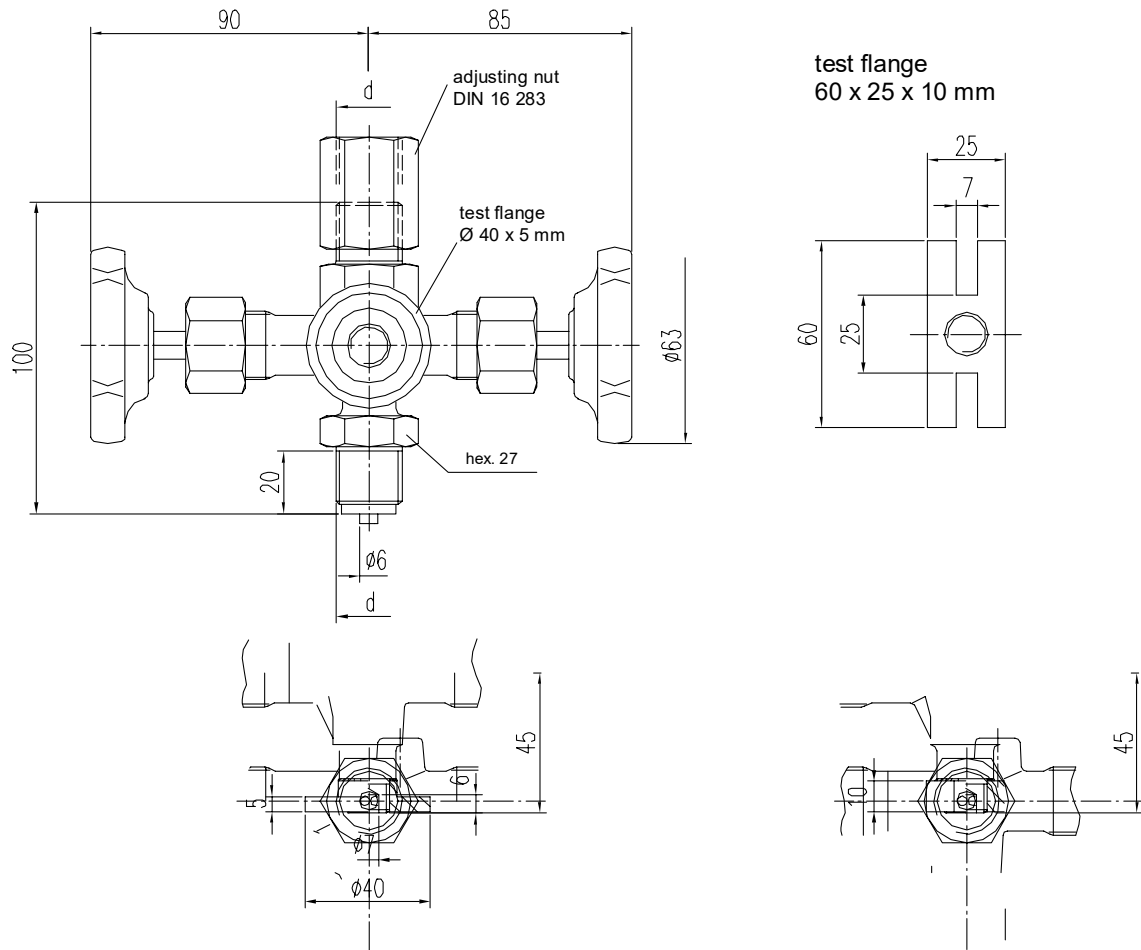
DVGW-Register-No.	DG-4315BQ0226
--------------------------	----------------------

PN	Connection thread d	Material	Part no.		
			Design A	Design B	Design B-AS12
100	G 1/2	brass steel st. st.	S004.80.000 S004.80.100 S004.80.200	S004.80.020 S004.80.120 S004.80.220	- S004.80.120.13 S004.80.220.13

Components	Brass	Steel	Stainless steel
	DIN - Material Number		
Body	brass	1.0460	1.4571
Valve stem	1.4104		1.4571
Needle tip	1.4104		1.4571
O-rings	FPM (Viton®)		
O-ring retainer	brass		1.4571
Union nut	galv. steel	steel	stainless steel
Swivel nut	brass	steel	1.4571
Adjusting nut	brass	steel	stainless steel
Handwheel	plastic		

- **Body:** brass: pressed part
steel / stainless steel: die-pressed part
- **Surface:** steel phosphatized
- Internal stem thread
- Stem with colled rolled surface and non-rotating needle tip
- Max. operating pressure: 100 bar
Temperature: - 5°C up to + 60°C
- Basis of type examination: DVGW VP 308
- For all kinds of gas in accordance with DVGW-list number G 260
- Available with inspection certificate 3.1 acc. to EN 10 204

Pressure gauge Double Valves similar DIN 16272, test flange



PN	Connection thread d	Material	Order-Codes, with test flange:	
			Ø 40 x 5 mm	60 x 25 x 10 mm
250	G 1/2	brass	003.4.620.0000.0	003.4.610.0000.0
400		steel	003.4.621.0000.0	003.4.611.0000.0
400		st. st.	003.4.622.0000.0	003.4.612.0000.0

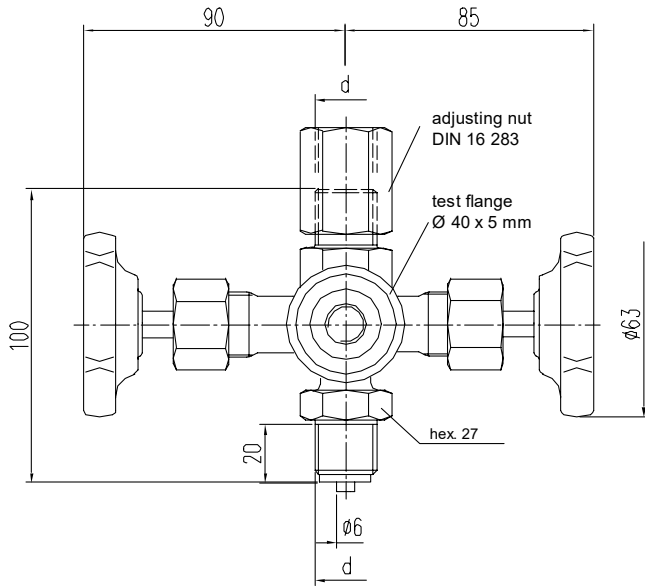
Components	Brass ¹⁾	Steel	Stainless steel ¹⁾
	DIN - Material Number		
Body ²⁾	brass	1.0460	1.4571
Flange	brass	steel	1.4571
Valve stem	1.4104		1.4571
Needle tip	1.4104		1.4571
Packing	PTFE up to 200°C		
Union nut	steel	stainless steel	
Adjusting nut	steel	stainless steel	
Handwheel	plastic		

- **Body:** brass: pressed part
steel / stainless steel: die-pressed part
- **Surface:** steel phosphatized
- Internal stem thread
- Stem with cold rolled surface and non-rotating needle tip

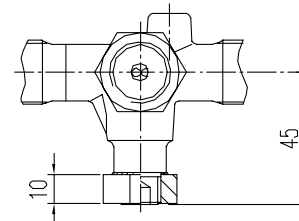
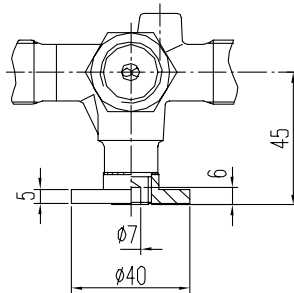
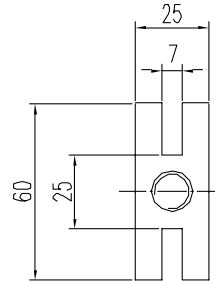
- 1) Can also be supplied for oxygen service. Please notice order instruction B 3!
- 2) Available with inspection certificate 3.1 acc. to EN 10 204



Pressure gauge Double Valves similar DIN 16272, test flange - DVGW tested



test flange
60 x 25 x 10 mm



D V G W - Registration

DVGW-Register-No.

DG-4315BQ0226

PN	Connection thread d	Material	Part no. with test flange	
			Ø 40 x 5 mm	60 x 25 x 10 mm
100	G 1/2	brass	S004.82.000	S004.81.000
		steel	S004.82.100	S004.81.100
		st. st.	S004.82.200	S004.81.200

Components	Brass	Steel	Stainless steel
	DIN - Material Number		
Body	brass	1.0460	1.4571
Flange	brass	steel	1.4571
Valve stem	1.4104		1.4571
Needle tip	1.4104		1.4571
O-rings	FPM (Viton®)		
O-ring retainer	brass		1.4571
Union nut	galv. steel	steel	stainless steel
Adjusting nut	brass	steel	stainless steel
Handwheel	plastic		

- **Body:** brass: pressed part
steel / stainless steel: die-pressed part
- **Surface:** steel phosphatized
- Internal stem thread
- Stem with cold rolled surface and non-rotating needle tip
- Max. operating pressure: 100 bar
Temperature: - 5°C up to + 60°C
- Basis of type examination: DVGW VP 308
- For all kinds of gas in accordance with DVGW-list number G 260
- Available with inspection certificate 3.1 acc. to EN 10 204