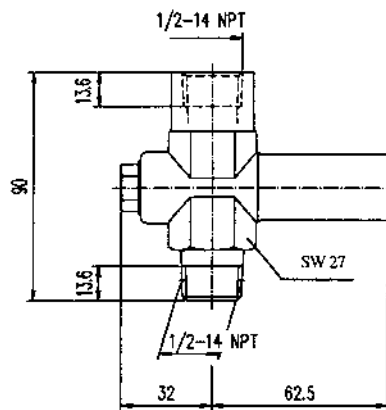


**Construction 1**



**Construction 2**

Construction		Material	Adjustable Range in bar					
			0.4...2.5	2...6	5...25	20...60	50...250	240...400
Connection		Type-Numbers						
1	1/2" BSP	Brass 1.4571	005.50.001	005.50.002	005.50.003	005.50.004	005.50.005	005.50.006
			005.50.201	005.50.202	005.50.203	005.50.204	005.50.205	005.50.206
2	1/2-14 NPT	Brass 1.4571	005.50.031	005.50.032	005.50.033	005.50.034	005.50.035	005.50.036
			005.50.231	005.50.232	005.50.233	005.50.234	005.50.235	005.50.236

**Max. Pressure Rating:** Material Brass: 600 bar. Material st.st. 1.4571: 1000 bar.

**Operating Temperature:** Max. +80°C

**CONSTRUCTIONS**

**Brass:** Body of brass (MS 58), piston in st.st. 1.4571, LH/RH union in carbon steel, black finished, sealing rings in FKM (Viton).

**Stainless steel:** Body in forged st.st. 1.4571, piston and LH/RH union in st.st. 1.4571, sealing rings in FKM (Viton).

**Service intended:** Overpressure protectors are intended to protect the pressure gauge against the effect of pressure that exceed the maximum pressure rating of the pressure gauge. Next to providing protection at faulty process conditions, the overpressure protector may also be used to isolate low pressure indicators at a system that requires to alternatively read very low and rather high pressures.

**Operating principle:** An adjustable spring-loaded piston operates a shut-off device once the system pressure exceeds a pre-set value. The pressure gauge remains isolated up to the maximum pressure rating of the protector. The device re-opens and sets the pressure gauge operative, once the pressure falls appr. 25% below the pre-set value.

**Options:** Connection M20x1.5  
Degreased construction for oxygen in st.st. 1.4571 (suitable for pressure max. 50 bar and temperature max. +60°C). In this case you have to add "FO" to the above mentioned Type-Numbers.  
Stainless steel construction on request with test certificate according to EN 10 204 - 3.1B.

