

# Capsule Pressure Switch

## Type 03.26

03.26



These diaphragm pressure switches are IP 55, are only suitable for gas measurement (air condition, ventilation, and flue draught). The sensing element is a metallic diaphragm and acts directly on the microswitch through a self-centering pivot. The simplicity of the design, without levers, cams or similar mechanism, gives the unit an exceptionally long working life.

### Functional and constructive characteristics

**Ranges:** 0...6/0...16 mbar; -16...0/-6...0 mbar.

**Electrical specifications:** N. 1 SPDT microswitch.  
(see microswitch table)

**Differential:** fixed.

**Repeatability:** - 3% of the full setting value.

**Set-point adjustment:** internal, micrometric adjustable.

**Protection:** IP 55 as per IEC 529.

**Cable exit:** 1/2" NPT F; 1/2" BSP F UNI 6125.

**Electrical wiring:** terminal strip.

**Earth contacts:** N. 1 internal.

**Process temperature:** max +100°C.

**Ambient temperature:** -25...+65 °C.

**Thermic drift:** - 0,05% / °C.

**Process connection:** anticorrosional aluminium, 1/4" NPT F.

**Elastic element:** AISI 316 st.st. capsule.

**Gasket:** VITON o-ring.

**Case:** AISI 304 st.st.

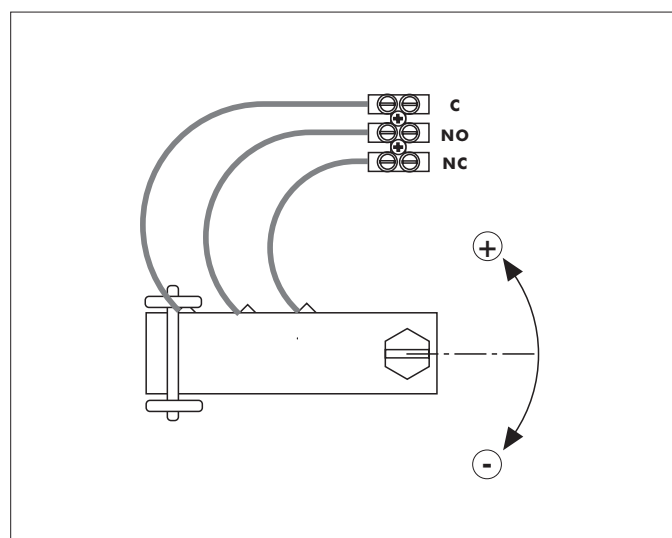
**Cover:** AISI 304 st.st., bayonet lock.

**Tag:** AISI 304 st.st., silk-screen painted.

### Set-point adjustment

With the cover removed:

the adjusting screw can be turned anticlockwise to increase the operating absolute pressure and clockwise to reduce it.  
(see drawing below)



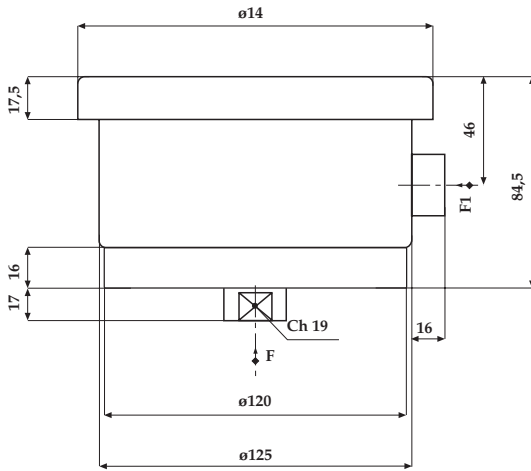
# Capsule Pressure Switch

## Type 03.26

03.26

REV. 04 E 04/01

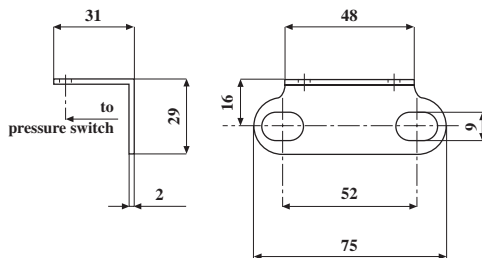
### DIMENSIONS (mm)



Weight: Kg. 0,95

F = process connection; F1 = cables exit.  
(see "How to order")

### WALL MOUNTING BRACKET



### HOW TO ORDER

	DESCRIPTION & CODE
<b>03</b>	03 - section
<b>26</b>	26 - type 26
<b>0/6 mbar</b>	see setting ranges table
<b>A</b>	A - 1 microswitch
<b>3</b>	Cable exit 3 - 1/2" NPT F
<b>23F</b>	Process connection 23F-1/4" NPTF
<b>0</b>	Process connection materiale 0 - standard
<b>C36</b>	see options table

### SETTING RANGES

Setting ranges (1)	Test pressure	Differential
0,7...6 mbar	10 mbar	0,5 mbar
1...16 mbar	20 mbar	0,8 mbar

(1) available also for vacuum & compound.

### MICROSWITCHES - ohmic load

Type	Code	250Vac	125Vac	125Vdc	24Vdc
std.	A	15A	15A	0,5A	2A

### OPTIONS

Description	Code
AISI 316 st.st. low housing	<b>C36</b>
PVC cable gland (cables $\phi$ 9÷12)	<b>P10</b>
Wall mounting bracket	<b>S15</b>

### ACCESSORIES

**Pigtail and siphons:** recommended with temperatures of 65° C (150° F) or over. For further details refer to our catalogue 05.5xx.



**DRUCK & TEMPERATUR Leitenberger GmbH**  
Postfach 64 • D-72136 Kirchentellinsfurt • Germany  
Tel.: 0 71 21 - 9 09 20 - 0 • Fax: 0 71 21 - 9 09 20 - 99  
E-Mail: dt-info@leitenberger.de  
INTERNET-Site: http://www.leitenberger.de

IN ORDER TO IMPROVE THEIR PRODUCTION, MESSRS. LEITENBERGER RESERVE THE RIGHT TO THEMSELVES TO MAKE ALL THE MODIFICATIONS THAT THEY DEEM INDISPENSABLE AT ANY TIME. UPDATED DATA SHEETS ARE AVAILABLE ON SITE: www.Leitenberger.de