

Sanitary Pressure Gauges

DS 63 - DS 100

01.SP

- AISI 316L st.st. wetted parts
- Ra -0,8µm - 32µin (150 Grit) finishing
- Reduced temperature error
- C.I.P. and S.I.P execution
- Autoclavable execution (on request)
- 1"1/2 or 2" TRI-CLAMP process connection



Authorization NO. 597



These instruments are designed for Sanitary, Food Process and Pharmaceutical Industries in compliance with standard n.74-01 of 3-A (Sanitary Standards Symbol Administrative Council). The absence of interstices and the mirror finishing of the components assure the best hygiene. The combination of pressure gauge and diaphragm seal allow to reduce the inner volumes and temperature error. To reduce the effects of severe working conditions like vibrations and pulsations, the instruments can be filled.

Functional and constructive characteristics

01.SP.2 - Fillable

Accuracy: grade A as per ANSI B40.1 (2-1-2%) for DS 100; grade B as per ANSI B40.1 (3-2-3%) for DS 63;

Ambient temperature: -25...+65° C.

Process temperature: -20...+100° C.

Max 130 °C for 1 hour during cleaning stage (C.I.P.)¹ and sterilization (S.I.P.)².

Working pressure (referred to the full scale value): max 75%.

Over pressure limit: not available.

Seal fill: oil for food service.

Protection: IP 67.

Process connection: AISI 316L st.st. with Ra -0,8µm- 32µin (150 Grit) finishing with:

1" 1/2 TRI-CLAMP® (ISO 2852)

2" TRI-CLAMP® (ISO 2852)

Diaphragm: AISI 316L st.st. with Ra -0,8µm- 32µin (150 Grit) finishing.

Welding: AISI 316L TIG st.st. with Ra -0,8µm- 32µin (150 Grit) finishing.

Case: electro polished AISI 304 st.st.

Ring: polished AISI 304 st.st., crimped.

Window: Plexiglas.

Dial: aluminium, white with black markings.

Pointer: aluminium black anodized.

Gasket, blow out vent and filling plug: EPDM.

01.SP.2 - Autoclavable Version (Option Code ATV)

This version is autoclavable for sterilization at +150°C for 1 hour.

Window: Polysulfone.

Gasket: silicone rubber.

Blow Out and filling plug: VITON.

Other data: like type 01.SP.2 - Fillable.

01.SP.3 - filled with dampening fluid

Fluid: glycerine 99,5% (USP, E.P. e F.U.) for food services.

Ambient temperature: +15...+65° C.

Other data: like type 01.SP.2 - Fillable.

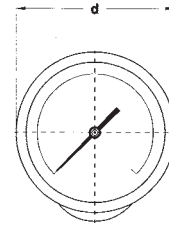
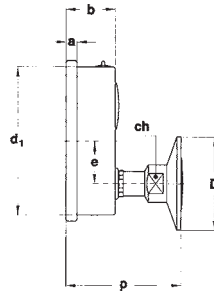
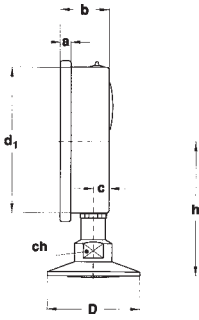
® TRI-CLAMP is a registered trademark of the TRI-CLOVER Co.

1) C.I.P. = Cleaned In Place

2) S.I.P. = Steamed In Place



TYPE, DIMENSIONS AND WEIGHTS (mm)



TYPE A

stem mounting;
lower connection.

TYPE D (DS 100 only)

stem mounting;
back connection.

DS	Type	a	b	c	d	d ₁	1" 1/2	D	2"	e	h	p	ch	Weight (01.SP.2)	Weight (01.SP.3)
63	A	5,5	28	10	68	62,5	50,5	64			79		22	0,28 Kg.	0,36 Kg.
100	A-D	7,5	34	11	110	101	50,5	64	29	92,5	79,5		22	0,42 Kg.	0,72 Kg.

RANGES - "C" = DS 63; "E" = DS 100.

PRESSURE

TAB. 1

RANGE	bar
0...1 (1)	E
0...1,6 (1)	E
0...2,5	C-E
0...4	C-E
0...6	C-E
0...10	C-E
0...16	C-E
0...25	C-E
0...40	C-E

TAB. 2

RANGE	psi ext.
	bar int.
0...15 (1)	E
0...30	C-E
0...60	C-E
0...100	C-E
0...160	C-E
0...200	C-E
0...300	C-E
0...400	C-E
0...600	C-E

(1) available only for 2" TRI-CLAMP connection

VACUUM & COMPOUND

TAB. 3

RANGE	bar
-1...0 (1)	E
-1...0,6 (1)	E
-1...1,5	C-E
-1...3	C-E
-1...5	C-E
-1...9	C-E
-1...15	C-E

TAB. 4

RANGE (2)	psi ext.
	bar int.
-30...0 (1)	E
-30...15 (1)	E
-30...30	C-E
-30...60	C-E
-30...100	C-E
-30...150	C-E
-30...300	C-E

(1) available only for 2" TRI-CLAMP connection

(2) vacuum unit of measurement: "inHg"

HOW TO ORDER

	CODES & DESCRIPTIONS
01	01- Bourdon tube pressure gauges
SP	SP - sanitary pressure gauges
2	2 - dry version 3 - filled version
A	A - lower connection D - back connection
E	C - DS 63 E - DS 100
2	2- up to 40 bar
0/100 psi	see ranges tables
ATO	ATO - 1" 1/2 TRI-CLAMP BTO - 2" TRI-CLAMP
ATV	see options table

OPTIONS - "C" = DS 63; "E" = DS 100.

DESCRIPTION	CODE	01.SP.2	01.SP.3
Autoclavable execution	ATV	E	
Calibration certificate	C01	C-E	C-E
Accuracy $\pm 1,6\%$	K16	E	E
Polycarbonate window	TPC	E	E



DRUCK & TEMPERATUR Leitenberger GmbH
Postfach 64 • D-72136 Kirchentellinsfurt • Germany
Tel.: 0 71 21 - 9 09 20 - 0 • Fax: 0 71 21 - 9 09 20 - 99
E-Mail: dt-info@leitenberger.de
INTERNET-Site: http://www.leitenberger.de