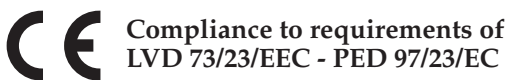


Pressure Gauges with Microswitch

Type 01.72 and 01.74 - DS 100

01.72-74



Compliance to requirements of
LVD 73/23/EEC - PED 97/23/EC

These instruments are designed for applications in the food, cannery, pharmaceutical, petrochemical industries, conventional and nuclear power stations. They safety control the automatic regulation of hydraulic and pneumatic equipment.

Functional and constructive characteristics

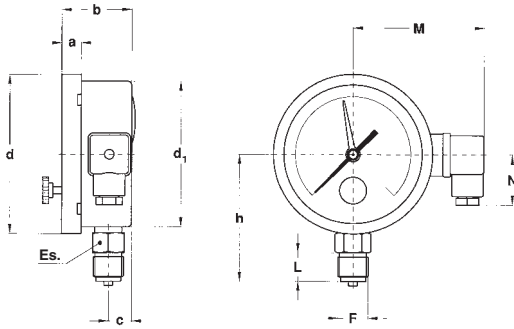
01.72 - Standard version

Accuracy: class 2,5 as per EN 837-1.
Ambient temperature: -25...+65 °C.
Process temperature: -25...+120 °C.
Working pressure: max 75% of the full scale value.
Overpressure: not suitable.
Protection degree: IP 44 as per IEC 529.
Electrical specifications: N. 1 SPDT microswitch.
Contact setting: between 10% and 75% of full scale value.
Differential: fixed, 2,5% of full scale value;
(option 10% of full scale value).
Socket material: OT 58 brass.
Elastic element: AISI 316L st.st.
Welding: silver alloy.
Case: AISI 304 st.st.
Ring: AISI 304 st.st., bayonet lock.
Window: Plexiglas, 4 mm thick.
Movement: stainless steel.
Dial: aluminium, white with black markings.
Pressure pointer: aluminium, black painted.
Set pointer: aluminium, red anodized.
Adjusting key: plastic, removable.
Window gasket: EPDM.
Blow out vent: EPDM.
Junction box: glass fibre reinforced poliammid with cable gland PG9 as per DIN 46320. PVC cable gland PG7 only for type B (flush mounting).

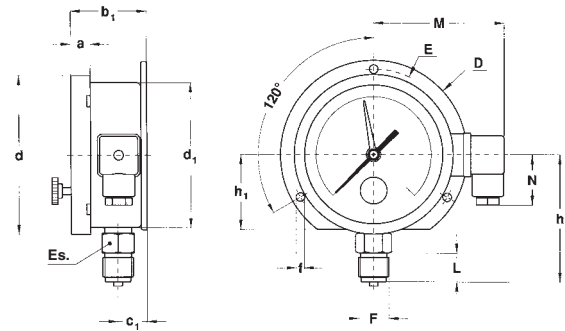
01.74 - Stainless steel version

Accuracy: class 2,5 as per EN 837-1.
Ambient temperature: -25...+65 °C.
Process temperature: -40...+150 °C.
Working pressure: max 75% of the full scale value.
Overpressure: not suitable.
Protection degree: IP 44 as per IEC 529.
Electrical specifications: N. 1 SPDT microswitch.
Contact setting: between 10% and 75% of full scale value.
Differenzial: fixed, 2,5% of full scale value;
(option 10% of full scale value).
Socket material: AISI 316L st.st.
Elastic element: AISI 316L st.st.
Welding: AISI 316 TIG.
Case: AISI 304 st.st.
Ring: AISI 304 st.st., bayonet lock.
Window: Plexiglas, 4 mm thick.
Movement: stainless steel.
Dial: aluminium, white with black markings.
Pressure pointer: aluminium, black painted.
Set pointer: aluminium, red anodized.
Adjusting key: plastic, removable.
Window gasket: EPDM.
Blow out vent: EPDM.
Junction box: glass fibre reinforced poliammid with cable gland PG9 as per DIN 46320. PVC cable gland PG7 only for type B (flush mounting).

TYPES, DIMENSIONS AND WEIGHTS

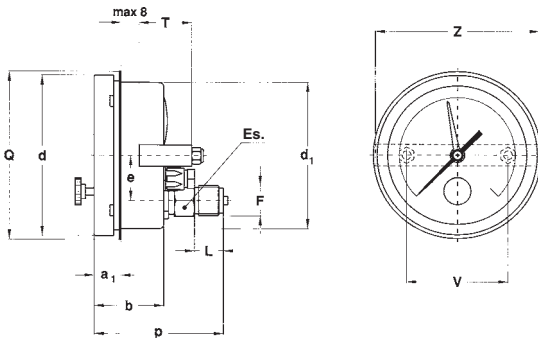
**TYPE A**

stem mounting;
lower connection.

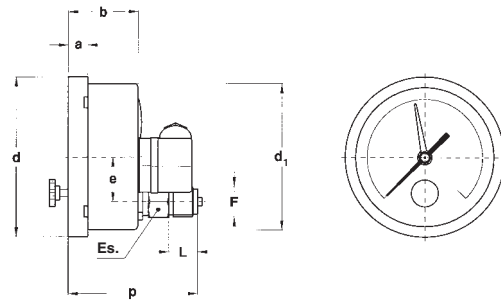
**TYPE C**

surface mounting, back flange;
lower connection.

Type	F	a	b	b ₁	c	c ₁	d	d ₁	f	h	h ₁	D	E	M	N	L	Es.	Weight
A	1/2" BSP or NPT	13	48,5	-	16,1	-	110,6	101	-	88,5	-	-	-	90,5	36	20	22	0,6 Kg.
C	1/2" BSP or NPT	13	-	52,5	-	20,1	110,6	101	6	88,5	52	130	118	90,5	36	20	22	0,6 Kg.

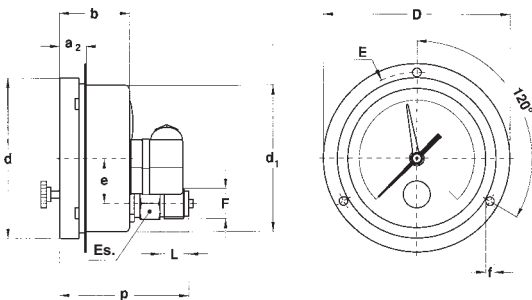
**TYPE B**

flush mounting, "U"-Clamp;
back connection.

**TYPE D**

stem mounting;
back connection.

Type	F	a	a ₁	a ₂	b	d	d ₁	e	f	p	D	E	Q	T	V	Z	L	Es.	Weight
B	1/2" BSP or NPT	-	20	-	48,5	110,6	101	31	-	90	-	-	112	41,5	70	112	20	22	0,6 Kg.
D	1/2" BSP or NPT	13	-	-	48,5	110,6	101	31	-	90	-	-	-	-	-	-	20	22	0,6 Kg.
E	1/2" BSP or NPT	-	-	20	48,5	110,6	101	31	6	90	132	118	-	-	-	-	20	22	0,6 Kg.

**TYPE E**

flush mounting, front flange;
back connection.

RANGES

PRESSURE

TAB. 1

Ranges	bar (1)	kPa	MPa	bar ext.	bar ext.	bar ext.
				(1)		
				psi int.	kPa int.	MPa int.
0...1	◆		◆	◆	◆	
0...1,6	◆		◆	◆	◆	
0...2,5	◆		◆	◆	◆	
0...4	◆		◆	◆	◆	
0...6	◆		◆	◆	◆	
0...10	◆		◆	◆		◆
0...16	◆		◆	◆		◆
0...25	◆		◆	◆		◆
0...40	◆		◆	◆		◆
0...60	◆		◆	◆		◆
0...100	◆	◆		◆		◆
0...160	◆	◆		◆		◆
0...250	◆	◆		◆		◆
0...300	◆					
0...400	◆	◆		◆		◆
0...600	◆	◆		◆		◆
0...1000		◆				
0...1600		◆				
0...2500		◆				

(1) Available also kg/cm²

TAB. 2

Ranges	psi	psi int.	psi ext.	psi ext.
		kPa ext.	bar int.	Kg/cm ² int.
0...15	◆	◆	◆	◆
0...30	◆	◆	◆	◆
0...60	◆	◆	◆	◆
0...100	◆	◆	◆	◆
0...160	◆	◆	◆	◆
0...200	◆	◆	◆	◆
0...300	◆	◆	◆	◆
0...400	◆	◆	◆	◆
0...600	◆	◆	◆	◆
0...800	◆	◆	◆	◆
0...1000	◆	◆	◆	◆
0...1500	◆	◆	◆	◆
0...2000	◆	◆	◆	◆
0...3000	◆	◆	◆	◆
0...4000	◆	◆	◆	◆
0...5000	◆	◆	◆	◆
0...6000	◆	◆	◆	◆
0...10000	◆	◆	◆	◆

VACUUM & COMPOUND

TAB. 3

Ranges	bar	kPa	bar ext.	bar ext.
			psi int.*	kPa int.
-1...0	◆		◆	◆
-1...0,6	◆		◆	◆
-1...1,5	◆		◆	◆
-1...3	◆		◆	◆
-1...5	◆		◆	◆
-1...9	◆		◆	◆
-1...15	◆		◆	◆
-1...24	◆		◆	◆
-100...0		◆		
-100...150		◆		
-100...300		◆		
-100...500		◆		
-100...900		◆		
-100...1500		◆		
-100...2400		◆		

* vacuum unit of measurement: "inHg"

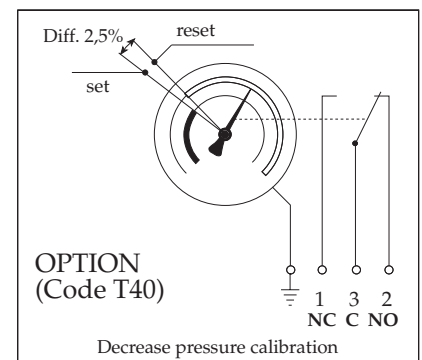
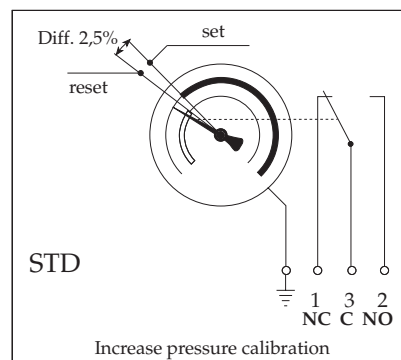
TAB. 4

Ranges	psi*	psi int.*	psi ext.*	psi ext.*
		kPa ext.	bar int.	Kg/cm ² int.
-30...0	◆	◆	◆	◆
-30...15	◆	◆	◆	◆

* vacuum unit of measurement: "inHg"

◆

MICROSWITCH: SETTING



RATING LOAD

Volt	DC	AC	Inductive load
220	0,3 A	4 A	4 A
110	0,4 A	4 A	4 A
48	4 A	4 A	4 A
24	4 A	4 A	4 A

WIRING

Wiring	Junction box	Cable
NC	Contact N.º1	Brown
NO	Contact N.º2	Black
C	Contact N.º3	Blue
Ground	Ground	Yellow-Green

OPTIONS

Description	Code	01.72	01.74
Under-glass adjusting (IP 55 protection degree)	CH1	◆	◆
Differential 10% of full scale value (for ranges ³ 2,5 bar)	D30	◆	◆
Oxygen service	P02		◆
Brass restrictor ø 0,4 mm. for ranges - 40 bar	S06	◆	
Stainless steel label	T25	◆	◆
Glass window (1)	T30	◆	◆
Calibration for pressure decrease	T40	◆	◆
AISI st.st. restrictor screw ø 0,7 mm. for ranges - 40 bar	V11		◆

(1) to be added to Option code CH1

HOW TO ORDER

	CODE & DESCRIPTION
01	01- bourdon tube pressure gauges
74	72 - MGS7 standard version 74 - MGS7 Stainless steel version
1	1 - standard version
C	A - lower connection, stem mounting B - back connection, flush mounting; "U" clamp C - lower connection, surface mounting; back flange D - back connection, stem mounting E - back connection, flush mounting; front flange
E	E - DS 100
2	1 - up to 2,5 bar 2 - from 4 to 40 bar 3 - over 40 bar
0/10 bar	see range tables
41M	21M - 1/4" BSP 23M - 1/4" NPT 31M - 3/8" BSP 33M - 3/8" NPT 41M - 1/2" BSP 43M - 1/2" NPT
V11	see options table

ACCESSORIES

Diaphragm seals: a complete range of diaphragm seals are available with a choice of materials of construction . Specifically for corrosive and difficult process fluids plus hygienic applications. For further details refer to data-sheets "04".

Adjustable over-load protector: this is useful for installations which may generate high overpressures; the pressure gauges is automatically excluded at the pre-set pressure and cut in again automatically when the operating pressure returns to normal. For further details refer to our catalogue 05.48A-49A.

Valves: for construction details and for use limits refer to our catalogue 05.

Pigtail and siphons: recommended with temperatures of 65° C (150° F) or over. For further details refer to our catalogue 05.5xx.

Pressure snubbers: for further details refer to our catalogue 05.450-470.



DRUCK & TEMPERATUR Leitenberger GmbH
 Postfach 64 • D-72136 Kirchentellinsfurt • Germany
 Tel.: 0 71 21 - 9 09 20 - 0 • Fax: 0 71 21 - 9 09 20 - 99
 E-Mail: dt-info@leitenberger.de
 INTERNET-Site: http://www.leitenberger.de