

Test Pressure Gauge, all stainless steel construction

"SOLID FRONT", Accuracy 0.25%

DS 150

01.25



These instruments have been designed for laboratories, instrument testing or recalibration facilities and to be used in other applications where accuracy and repeatability are of primary importance. These instruments have a solid separating wall in stainless steel, placed between the dial and the elastic element and an integral blow out back that is released from the case whenever a pressure is created inside the case, due to leaks or accidental ruptures of the elastic element. The process fluids should be gases or liquids, they must not have high viscosity and must not cristalize. The wetted parts in AISI 316L allow to use them in the worst working conditions determined by aggressive medium and environment. Each instrument is supplied with a LR-GERMANY calibration report that guarantees the traceability to the National and International master primary instruments. Upon request we can supply the calibration certificate issued by an Internationally recognized laboratory, traceable to international standard.

Functional and constructive characteristics.

01.25.1 high precision, solid-front

Accuracy class: 0,25 as per EN 837-1.

Ambient temperature: -20...+65 °C.

Process fluid temperature: max +65 °C.

Calibration temperature: +20 °C.

Thermal drift: taking 20 °C as the calibration temperature, will be within 0,3 of F.S.V. of the full scale value for a temperature change of ± 10 °C.

Working pressure: max 75% of the full scale value.

Overpressure (referred to the full scale value): 25%for ranges up to 100 bar; 15% for ranges over 100 bar.

Protection: IP 55 as per IEC 529.

Socket material: AISI 316L st.st.

Elastic element: AISI 316L seamless tube.

Welding: in AISI 316L TIG.

Case: AISI 304 st.st.

Ring: AISI 304 st.st., bayonet lock.

Blow out disk: AISI 304 st.st.

Window: laminated safety glass.

Movement: bronze; high precision type.

Dial: white aluminium with black markings and anti-parallax mirror band.

Pointer: balanced, anti-parallax knife-edge micrometer adjustable.

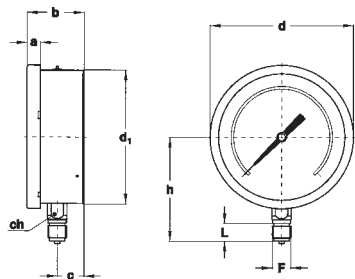
Gaskets: EPDM.

RANGES

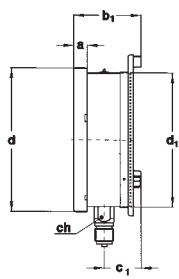
Range	Minor graduation	Figure interval	bar	kPa	MPa	psi
0...1	0,005	0,1	◆		◆	
0...1,6	0,005	0,1	◆		◆	
0...2,5	0,01	0,2	◆		◆	
0...4	0,02	0,2	◆		◆	
0...6	0,02	0,5	◆		◆	
0...10	0,05	1	◆		◆	◆
0...16	0,05	1	◆		◆	◆
0...25	0,1	2	◆			
0...30	0,1	2	◆			◆
0...40	0,2	2	◆			
0...60	0,2	5	◆			◆
0...100	0,5	10	◆	◆		◆
0...160	0,5	10	◆	◆		◆
0...250	1	20		◆		
0...300	1	30		◆		◆
0...400	2	20		◆		◆
0...600	2	50		◆		◆
0...1000	5	100				◆
0...2000	10	100				◆

TYPE, DIMENSIONS AND WEIGHTS

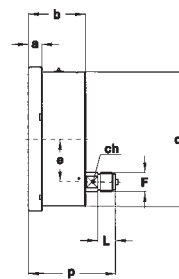
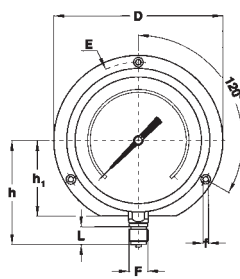
REV. 00 E 09 / 00



TYPE A
 stem mounting,
 lower connection.



TYPE C
 surface mounting, back flange;
 lower connection.



TYPE D
 stem mounting,
 back connection.

Type	F	a	a ₂	b	b ₁	c	c ₁	d	d ₁	e	f	h	h ₁	p	D	E	L	ch	Weight
A	1/2" BSP or NPT	15	-	64	-	29	-	161	150,5	-	-	117	-	-	-	-	20	24	1,19 Kg.
C	1/2" BSP or NPT	15	-	-	75,5	-	40,5	161	150,5	-	6	117	85	-	190	175	20	24	1,31 Kg.
D	1/2" BSP or NPT	15	-	64	-	-	-	161	150,5	47,8	-	-	-	97,5	-	-	20	17	1,10 Kg.
E	1/2" BSP or NPT	-	25,5	64	-	-	-	161	150,5	47,8	6	-	85	97,5	190	175	20	17	1,22 Kg.

HOW TO ORDER

DESCRIPTION & CODE

01 01- bourdon tube pressure gauges

25.1 25.1 - Test gauge-All stainless steel, solid-front MN25

D A - lower connection - stem mounting
 C - bottom connection - wall mounting, back flange
 D - back connection - stem mounting
 E - back connection - flush mounting, front flange

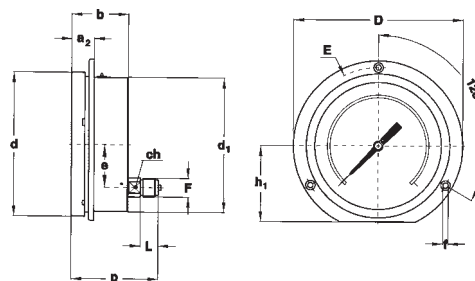
G G - DN150

2 1 - up to 2,5 bar
 2 - from 4 to 40 bar
 3 - over 40 bar

0/10 bar see ranges table

41M 21M - 1/4" BSP
 23M - 1/4" NPT
 41M - 1/2" BSP
 43M - 1/2" NPT

A40 see options table



TYPE E
 flush mounting, front flange;
 back connection.

OPTIONS

DESCRIPTION	CODE
Carrying case (1)	A40
S.I.T. Certificate for pressure ranges	CE1
Oxygen service M049	P02
AISI 316 ANCC valve	V16

(1) Available only for lower connection, stem mounting



DRUCK & TEMPERATUR Leitenberger GmbH
 Postfach 64 • D-72136 Kirchentellinsfurt • Germany
 Tel.: 0 71 21 - 9 09 20 - 0 • Fax: 0 71 21 - 9 09 20 - 99
 E-Mail: dt-info@leitenberger.de
 INTERNET-Site: http://www.leitenberger.de

IN ORDER TO IMPROVE THEIR PRODUCTION, MESSRS. LEITENBERGER RESERVE THE RIGHT TO MAKE ALL THE MODIFICATIONS THAT THEY DEEM INDISPENSABLE AT ANY TIME. UPDATED DATA-SHEETS ARE AVAILABLE ON SITE: www.Leitenberger.de